

# Fenland Suite integrated dance performance

## Lantern Dance Theatre Company

FENLAND SUITE with first performance of CLEAR SPACE

SUNDAY 29TH JUNE 3:00 P.M.

The Paradise Centre, Newnham Street, Ely

Lantern Dance Theatre Company presents *Fenland Suite*, a set of dance works inspired by local landscape and history. Today's performance includes the first performance of *Clear Space*, the result of a unique collaboration between Lantern and professional integrated dance group Stopgap Dance Company which, like Lantern, makes and performs its own choreography.

Having created over thirty new works for Lantern in the past five years, we wanted to do something at the Isle of Ely Arts Festival to showcase the exceptional creativity of our young dancers. We asked Stopgap Dance Company to lead a two-day workshop here in Ely to make a new piece. Stopgap's Creative Learning Manager Siobhan Hayes and dancer Hannah Sampson took the architecture and atmosphere of Ely Cathedral as their starting point and worked with our dancers to make the dance material. The result is an original and captivating ten minute piece that blends a visitor's response to Ely Cathedral with creative work by young people from our city.

### Programme

*ENIGMA* with sculpture installation by Zoe Chamberlain

Music: Vangelis; Laurent Garnier.

Theme: Creatures of legend in the Fens

### *Aqua & Terra*

Music: from *The River Cam* by Eric Whitacre

Theme: The river in Cambridge and the Fens

### FIRST PERFORMANCE

*Clear Space (The Grandeur of Architecture)*

Music: Traditional; Susumu Yokota

Choreography: Siobhan Hayes, Hannah Sampson and Company dancers.

Theme: The architecture & atmosphere of Ely Cathedral

### *Cocoon*

Theme: Nature and wildlife in the Fens

Music: from *Tela* by Marcus Barcham-Stevens.

### *Weaving*

Theme: Handing down traditional craft knowledge

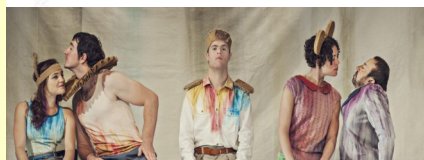
Music: from *Tela* by Marcus Barcham-Stevens, a Lantern commission. Performed by members of Chroma Ensemble, led by the composer (violin).



Our *Clear Space* project was commissioned by the Isle of Ely Arts Festival & funded by Arts Council England.



"ENIGMA" photo by Rachel Cherry for UDance 2013



Stopgap Dance Company was founded in 1995 as a community dance project. It has evolved to become the first British company of disabled and non-disabled dancers to create its own dance work for national and international touring. The company continues to invest in the next generation of integrated dance artists by sharing its expertise with SG2 Company, Youth Company and through other creative learning projects and publications.

Source: [www.stopgapdance.com](http://www.stopgapdance.com)

Readings by Mike Rouse, local author and Historian.

# Fenland Suite integrated dance performance

## ABOUT LANTERN DANCE THEATRE

Lantern Dance Theatre is an integrated contemporary dance company in which young people with and without disabilities train and perform on equal terms. There are about 20 members. About half have a disability.

Lantern was founded in 2005 by dancer and choreographer Helen Pettit as a group on which to make new work. Since then Helen has made many new pieces for Lantern, from short numbers to full length ballets. Lantern also commissions new work from musicians, visual artists and guest choreographers.

Lantern is all about participation, enjoyment and achievement. For us, integrated means that everyone does everything together, all the time. It's active, energetic and fun. There are three basic rules: come to class every week, train hard and perform full on.

Lantern's Patron is Solomon Golding, Artist of The Royal Ballet and a founder member of the company. Solomon began his dance career as a pupil of Helen's before winning a place at the Royal Ballet School. He is currently on tour with the Royal Ballet to Russia, Taiwan & China.

## DANCERS

Daniel Bullman, Lucy Butler, Lars Carr, Nell Constantinides, Ben Evans, Julia Evans, Olivia Fahy, Chloe George, Maddy Gregory, Sophie Gregory, Alex Lee, Charlotte Marsh, Stuart Mitchell, Ellen Mitchell, Catherine Mizen, Eve Newman, Daniel Pettifor, Claudia Stein-Carr, Brian Sulman, Katie Turvey, Rebecca Valentine, Lauren Wallace, Hannah Wright.

## PRODUCTION CREDITS

Choreography of *ENIGMA*, *Aqua & Terra*, *Cocoon* and *Weaving* by Helen Pettit

Artistic Director, Lantern Dance Theatre

Costumes by Rebecca Valentine

Lighting by Nathan Jones & Lorry Spry

Produced by Jonathan Rogers

## THANKS TO...

Stopgap Dance Company

ADeC

The Isle of Ely Arts Festival

The Paradise Centre

Mike Rouse

[www.lanterndance theatre.org.uk](http://www.lanterndance theatre.org.uk)

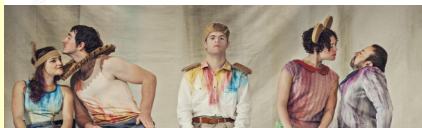
@LanternDanceCo



Lantern's Patron, Solomon Golding of the Royal Ballet. Photo © ROH 2014



Our Stopgap workshop group at The Paradise Centre. In yellow, Siobhan Hayes, Stopgap's Creative Learning Manager. In red, Hannah Sampson, Stopgap dancer.



"Stopgap value a pioneering spirit and are committed to making discoveries about integrating disabled and non-disabled people through dance. Difference is our means and our method."

"Our productions seek to offer a window into a parallel world where human interdependence, strength and vulnerability play out with poetic realism. "