

# Clear Space integrated dance performance

## Lantern Dance Theatre Company

**CLEAR SPACE** with first performance of **TALL TALES & SHORT STORIES** SUNDAY 28TH JUNE 2015 3:00 P.M.  
The Paradise Centre, Newnham Street, Ely

Welcome to *CLEAR SPACE*, a programme of integrated contemporary dance including the first performance of *Tall Tales and Short Stories*, a new work made for us by Siobhan Hayes of professional integrated dance group Stoppag Dance Company. The theme of *Tall Tales* is "Let Me Tell You A Story". It began life in a workshop in Ely last weekend. We like the result so much that we are planning to use it as the starting point for some more new work on the theme of local storytelling, as we did last year with *Fenland Suite* on the theme of local landscape and history. Many thanks to the Isle of Ely Arts Festival for commissioning it and the first number in the show, *Clear Space*, made for us by Stoppag last year and inspired by the architecture and atmosphere of Ely Cathedral.

The performers need a few minutes to change between numbers so please be patient while they get ready.

*Clear Space (The Grandeur of Architecture)*  
Part of "Fenland Suite"

Choreography: Siobhan Hayes and Company dancers  
Music: Traditional; Susumu Yokota

*Closer*

Choreography: Tim Rayne  
Music: Stephane Pompougnac, Closer to Julie

*Never Let Me Go*

Choreography: Rebecca Rowson  
Music: Florence & The Machine, Never Let Me Go

*Cobweb Fairies: Two Dances from our 2015 ballet*  
"A Midsummer Night's Dream"

Music: Erik Satie, Gnossiennes nos.3 & 4

*The Parting*

Music: Apocalyptica, Fade to Black

*Moth Fairies: Dance from "A Midsummer Night's Dream"*

Music: Erik Satie, Gnossienne no. 1

*Tall Tales & Short Stories*

Are you sitting comfortably? Then I'll begin. Inspired by authors such as Roald Dahl and C.S. Lewis, the dancers weave their own unique stories through the space. Let the dancers take you through our collection of stories, poems and tales.

Choreography: Siobhan Hayes & Company dancers  
Music: Apparat, K&F Thema

*Get a Move On*

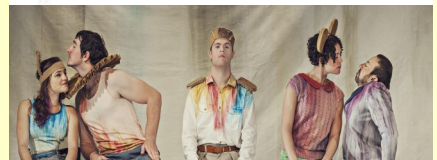
Music: Mr. Scruff, Get a Move On



Our *Tall Tales* project was commissioned by the Isle of Ely Arts Festival & funded by Arts Council England.



Lantern at the Paradise Centre, June 2014



Stoppag Dance Company was founded in 1995 as a community dance project. It has evolved to become the first British company of disabled and non-disabled dancers to create its own dance work for national and international touring. The company continues to invest in the next generation of integrated dance artists by sharing its expertise with SG2 Company, Youth Company and through other creative learning projects and publications.

[www.stoppagdance.com](http://www.stoppagdance.com)

# Clear Space integrated dance performance

## ABOUT LANTERN DANCE THEATRE

Lantern Dance Theatre is an integrated contemporary dance company in which people with and without disabilities train and perform on equal terms. There are about 20 members. About half have a disability.

Lantern was founded in 2005 by dancer and choreographer Helen Pettit as a group on which to make new work. Since then Helen has made many new pieces for Lantern, from short numbers to full length ballets. Lantern also commissions new work from musicians, visual artists and guest choreographers.

Lantern is all about participation, enjoyment and achievement. For us, integrated means that everyone does everything together, all the time. It's active, energetic and fun. There are three basic rules: come to class every week, train hard and perform full on.

Lantern's Patron is Solomon Golding, Artist of The Royal Ballet and a founder member of the company. He is currently on tour with the Royal Ballet in New York.

## DANCERS

Daniel Bullman, Louise Carbis, Lars Carr, Nell Constantinides, Sarah Diss, Ben Evans, Julia Evans, Olivia Fahy, Chloe George, Charlotte Marsh, Lucy Marshall, Ellen Mitchell, Catherine Mizen, Eve Newman, Oliver Rose, Claudia Stein-Carr, Brian Sulman, Katie Turvey.

## PRODUCTION CREDITS

Choreography of A Midsummer Night's Dream, The Parting and Get a Move On by Helen Pettit, Artistic Director  
Costumes by Rebecca Valentine  
Lighting by Nathan Jones & Lorry Spry  
Produced by Jonathan Rogers

## THANKS TO...

Stopgap Dance Company  
The Isle of Ely Arts Festival  
ADeC - Arts Development in East Cambridgeshire  
The Paradise Centre  
1st Ely Scouts Group  
[www.lanterndance theatre.org.uk](http://www.lanterndance theatre.org.uk) @LanternDanceCo

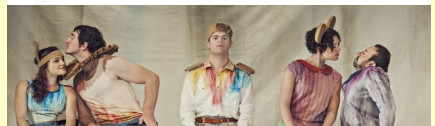
Date for your diary Friday 28th August "Spiritus"  
Lantern's 11th annual lunchtime performance in the Lady Chapel of Ely Cathedral. 1:10 p.m. Free admission with Resident's Pass.



Lantern's Patron, Solomon Golding of the Royal Ballet. Photo © ROH 2014



Our workshop group on June 21 2015 with Siobhan Hayes of Stopgap Dance Company (centre).



"Stopgap value a pioneering spirit and are committed to making discoveries about integrating disabled and non-disabled people through dance. Difference is our means and our method."

"Our productions seek to offer a window into a parallel world where human interdependence, strength and vulnerability play out with poetic realism. "